

Residential Overhead with Service Mast

Service entrance
Conductors size and type?
(from weatherhead to meter)

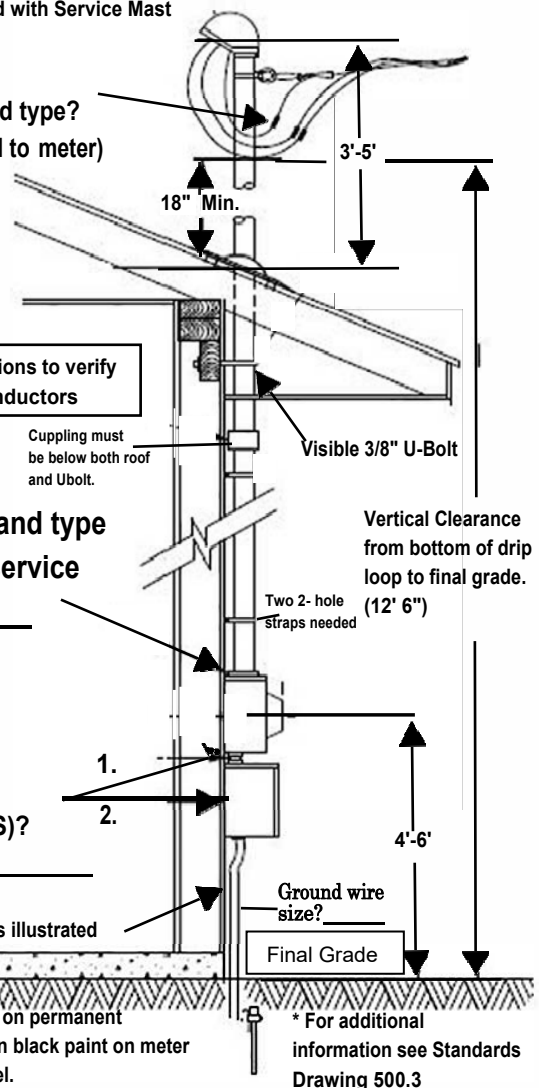
*Provide load calculations to verify
service entrance conductors

Conductor size and type
from meter to service
panel? _____

Size of electrical
equipment (AMPS)?
1. _____ 2. _____

Ensure grounding is illustrated

*Ensure full address is on permanent
structure or stenciled in black paint on meter
can or disconnect panel.



* For additional
information see Standards
Drawing 500.3